

For Lease

## Shoppes at Route 512

PA Route 512 & Silver Crest Road  
East Allen Township, Northampton County, PA

For Lease

## East Allen Marketplace

PA Route 512 & Silver Crest Road  
East Allen Township, Northampton County, PA

### PROPERTY HIGHLIGHTS

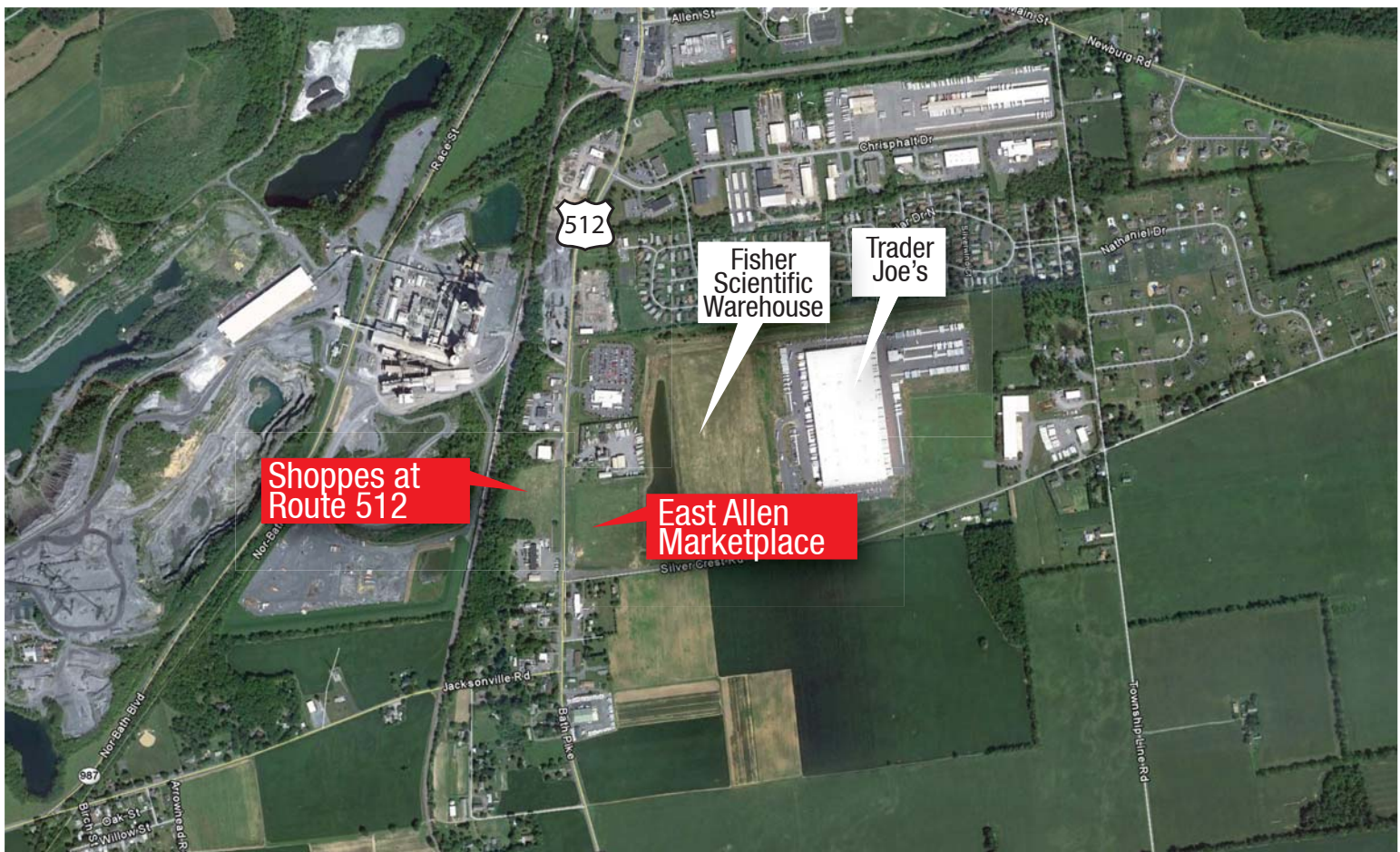
#### Features:

- 36,000 SF of new retail and office space
- Ample Parking with high traffic visibility from PA Route 512
- Shopping Center is in close proximity to expanding residential population
- New signaled intersection

#### Features:

- 42,500 SF of new retail and office space
- Adjacent to over 1.2 million SF of new industrial space (Trader Joe's and Fisher Scientific)
- Space available includes pads with drive-thru service, inline space and encap opportunities

Excellent Exposure and Signage in both Centers on Route 512



**NAI** Geis Realty Group, Inc.

Commercial Real Estate Services, Worldwide.

#### contact information

**Bill Deasey**

bdeasey@geisrealty.com

tel 610 989 0300

fax 610 989 0234

www.geisrealty.com

The information contained herein has been given to us by the owner of the property or other sources we deem reliable. We have no reason to doubt its accuracy, but we do not guarantee it. All information should be verified prior to purchase or lease.

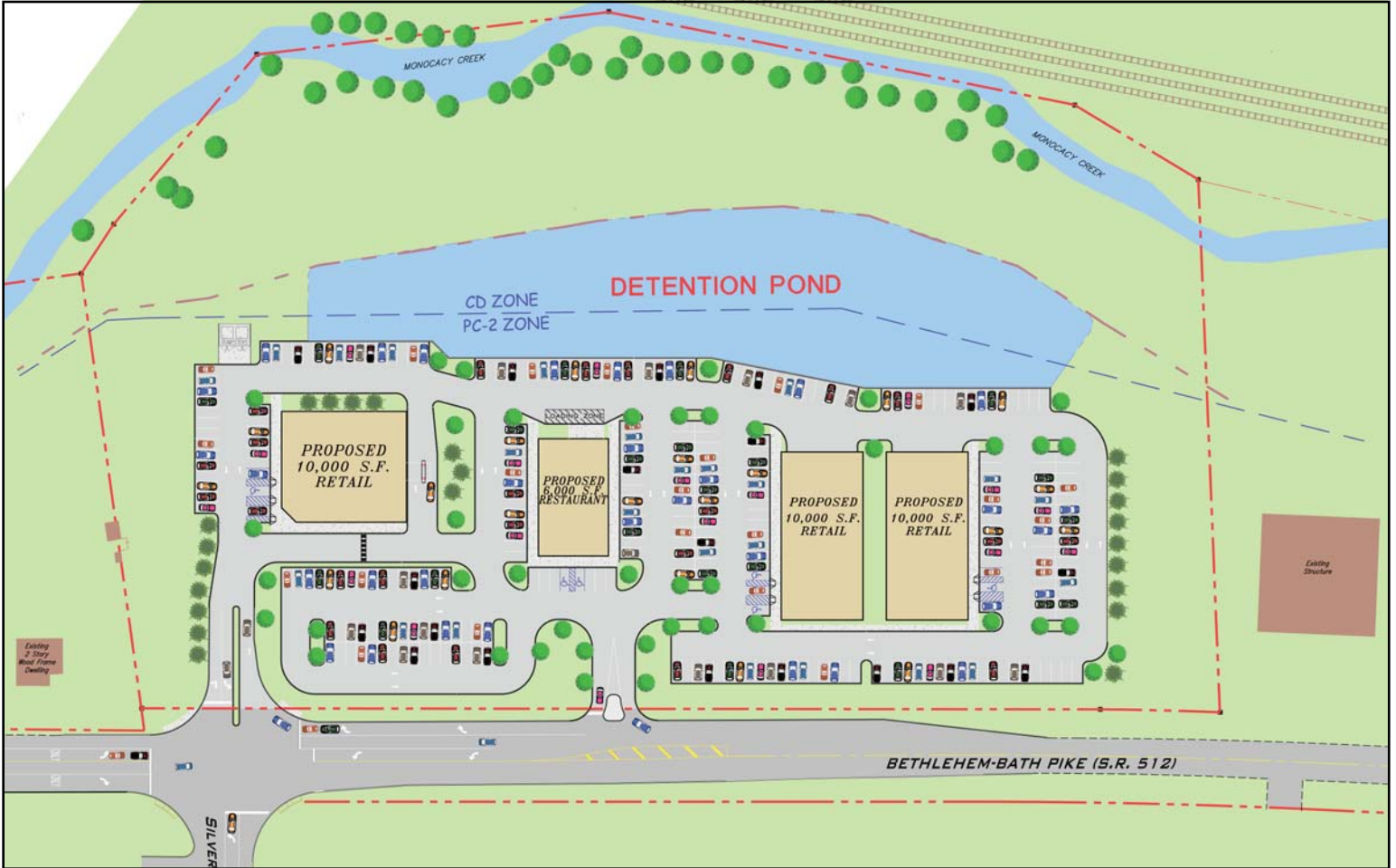
For Lease

# Shoppes at Route 512

PA Route 512 & Silver Crest Road  
East Allen Township, Northampton County, PA



Excellent Exposure and Signage on Route 512



**NAI** Geis Realty Group, Inc.

Commercial Real Estate Services, Worldwide.

contact information

Bill Deasey

bdeasey@geisrealty.com

tel 610 989 0300

fax 610 989 0234

www.geisrealty.com

The information contained herein has been given to us by the owner of the property or other sources we deem reliable. We have no reason to doubt its accuracy, but we do not guarantee it. All information should be verified prior to purchase or lease.

For Lease

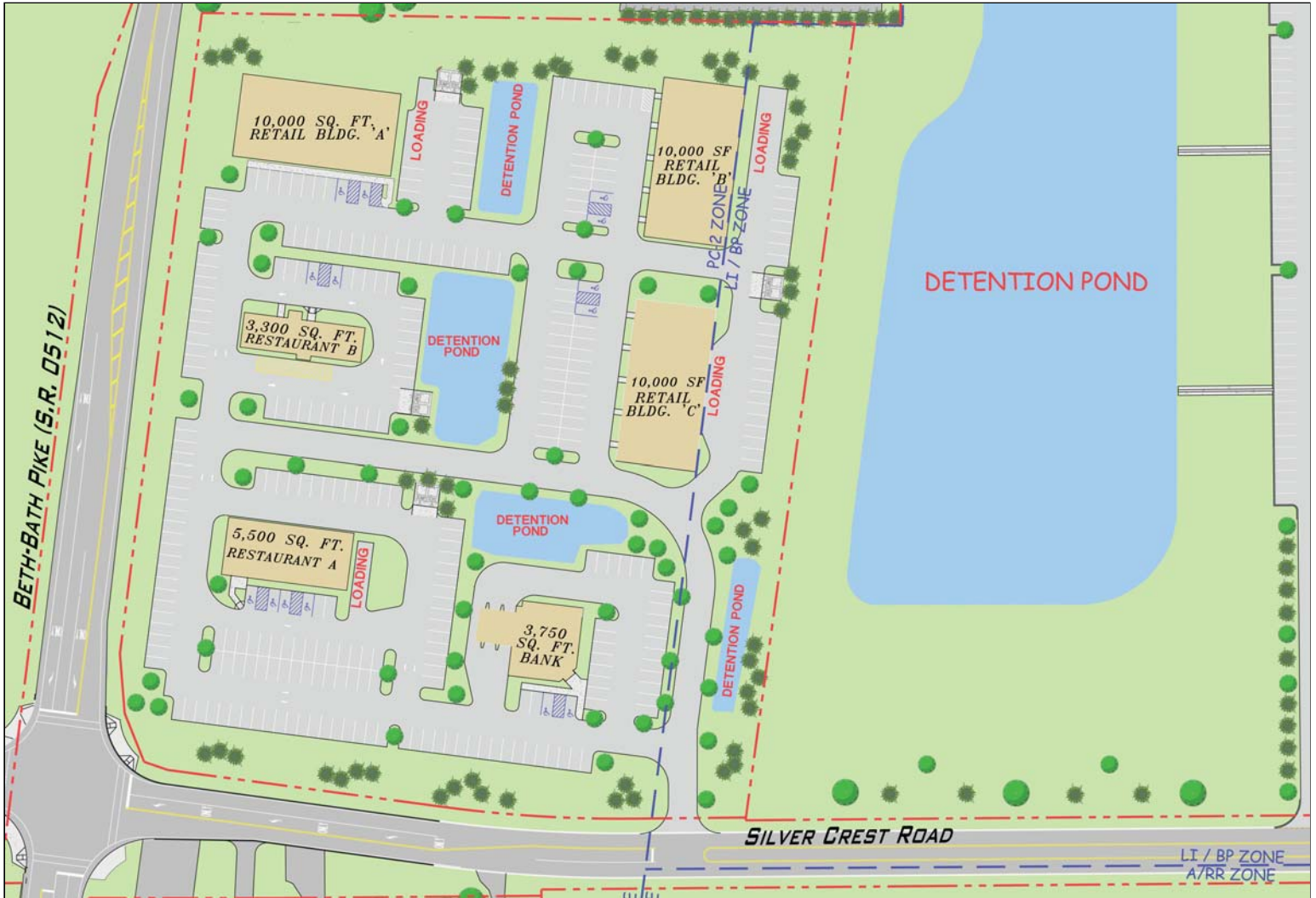
# East Allen Marketplace

PA Route 512 & Silver Crest Road

East Allen Township, Northampton County, PA



Excellent Exposure and Signage on Route 512



**NAI** Geis Realty Group, Inc.

Commercial Real Estate Services, Worldwide.

**contact information**

**Bill Deasey**

bdeasey@geisrealty.com

tel 610 989 0300

fax 610 989 0234

www.geisrealty.com

The information contained herein has been given to us by the owner of the property or other sources we deem reliable. We have no reason to doubt its accuracy, but we do not guarantee it. All information should be verified prior to purchase or lease.